

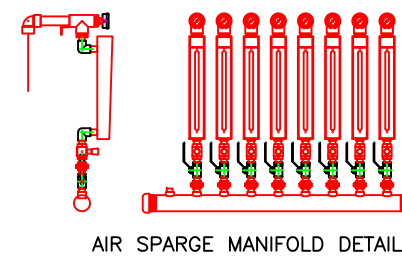
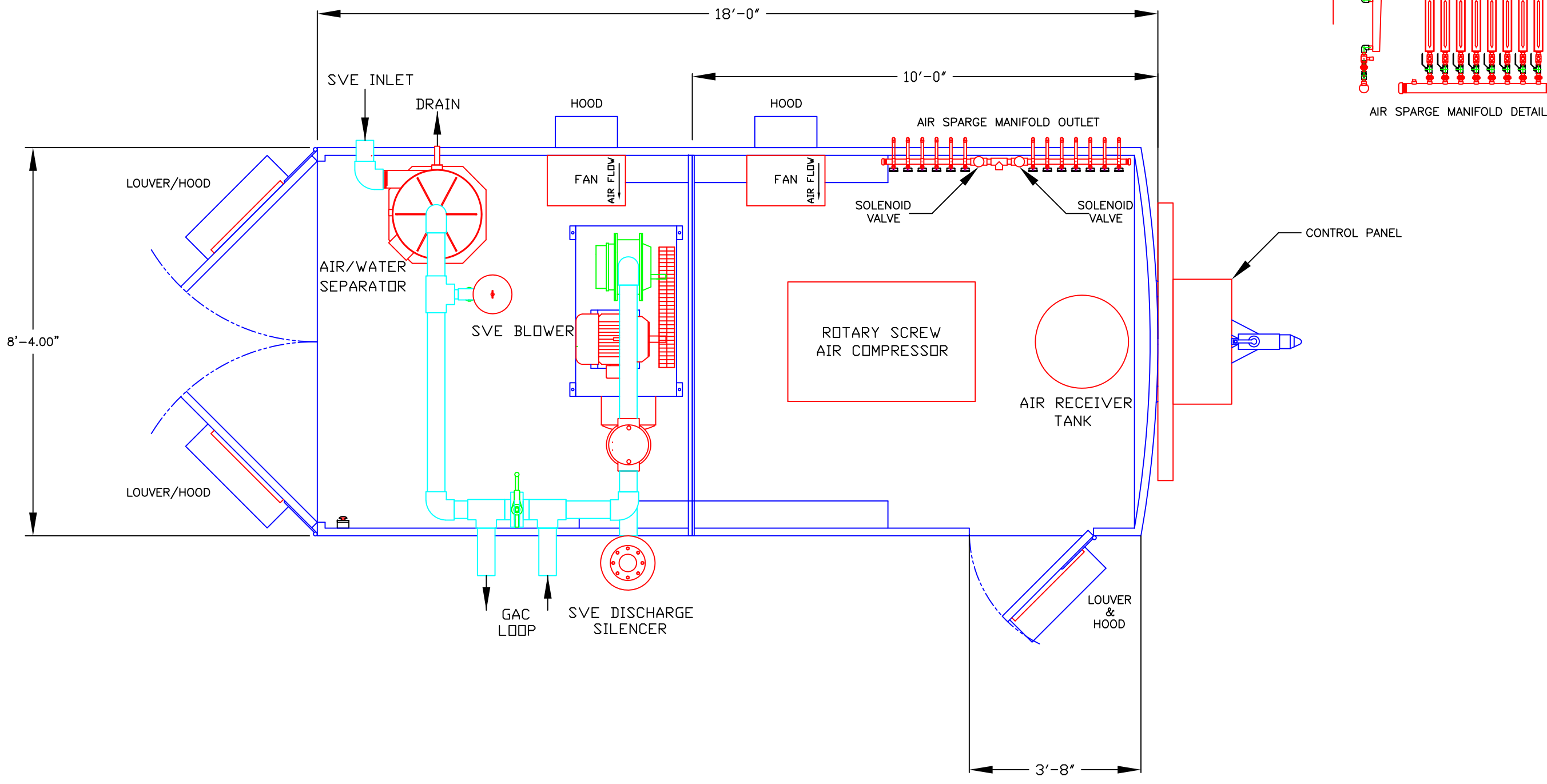
4

3

2

1

REVISIONS			
REV	DESCRIPTION	DATE	APPR



D

D

C

C

B

B

A

A

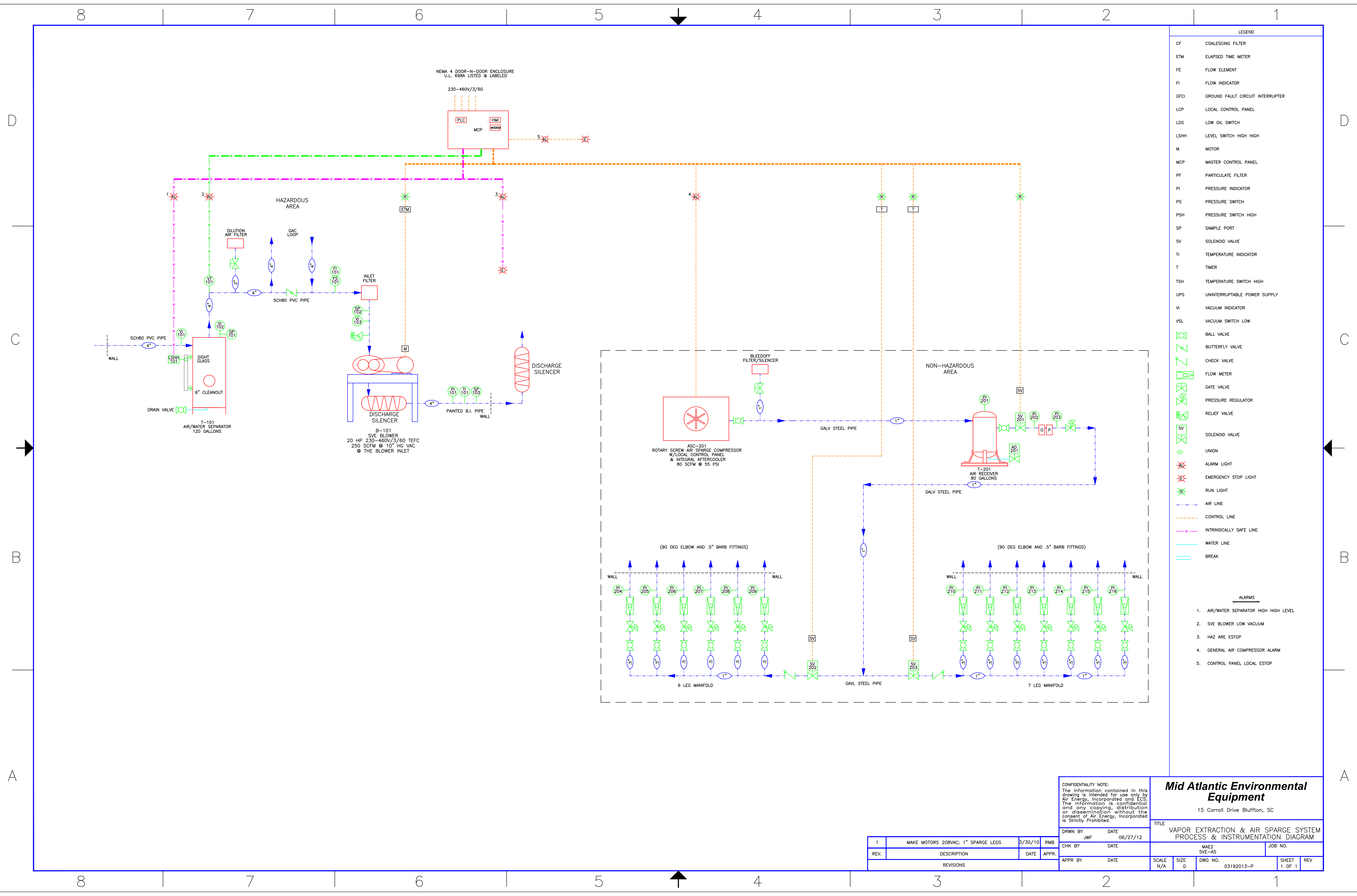
<p>CONFIDENTIALITY NOTE: The information contained in this drawing is intended for use only by MAE2 and its client. The information is confidential and any copying, distribution or dissemination without the consent of MAE2 is STRICTLY PROHIBITED.</p>		<p>MID-ATLANTIC ENVIRONMENTAL EQUIPMENT, INC. 15 CARROLL DRIVE BLUFFTON, SC 29910 TEL: (843) 836-1804 Fax (843) 836-1805</p>			
<p>DRWN BY: JWF DATE: 06/27/12</p>		<p>TITLE: COWBOY #34 SVE/AIR SPARGE SYSTEM</p>			
<p>CHK BY: DATE:</p>		<p>JOB NO.</p>		<p>SCALE: 1"=30"</p>	
<p>APPR BY: DATE:</p>		<p>SIZE: C</p>	<p>DWG NO.</p>	<p>SHEET 1 OF 1</p>	<p>REV</p>

4

3

2

1



- LEGEND
- CF COALESCING FILTER
 - ETM ELAPSED TIME METER
 - FE FLOW ELEMENT
 - FI FLOW INDICATOR
 - GFCI GROUND FAULT CIRCUIT INTERRUPTER
 - LCP LOCAL CONTROL PANEL
 - LOS LOW OIL SWITCH
 - LSHH LEVEL SWITCH HIGH HIGH
 - M MOTOR
 - MCP MASTER CONTROL PANEL
 - PF PARTICULATE FILTER
 - PI PRESSURE INDICATOR
 - PS PRESSURE SWITCH
 - PSH PRESSURE SWITCH HIGH
 - SP SAMPLE PORT
 - SV SOLENOID VALVE
 - TI TEMPERATURE INDICATOR
 - T TIMER
 - TSH TEMPERATURE SWITCH HIGH
 - UPS UNINTERRUPTABLE POWER SUPPLY
 - VI VACUUM INDICATOR
 - VSL VACUUM SWITCH LOW
 - BALL VALVE
 - BUTTERFLY VALVE
 - CHECK VALVE
 - FLOW METER
 - GATE VALVE
 - PRESSURE REGULATOR
 - RELIEF VALVE
 - SOLENOID VALVE
 - UNION
 - ALARM LIGHT
 - EMERGENCY STOP LIGHT
 - RUN LIGHT
 - AIR LINE
 - CONTROL LINE
 - INTRINSICALLY SAFE LINE
 - WATER LINE
 - BREAK
- ALARMS
1. AIR/WATER SEPARATOR HIGH HIGH LEVEL
 2. SVE BLOWER LOW VACUUM
 3. HAZ ARE ESTOP
 4. GENERAL AIR COMPRESSOR ALARM
 5. CONTROL PANEL LOCAL ESTOP

CONFIDENTIALITY NOTE:
The information contained in this drawing is intended for use only by Air Energy, Incorporated and ECS. The information is confidential and any copying, distribution or dissemination without the consent of Air Energy, Incorporated is Strictly Prohibited.

Mid Atlantic Environmental Equipment
15 Carroll Drive Bluffton, SC

TITLE
VAPOR EXTRACTION & AIR SPARGE SYSTEM
PROCESS & INSTRUMENTATION DIAGRAM

DRWN BY JWF DATE 06/27/12
CHK BY MAE2 DATE
APPR BY SVE-AS DATE

SCALE N/A SIZE D DWG NO. 03192013-P SHEET 1 OF 1 REV

REV.	DESCRIPTION	DATE	APPR.
1	MAKE MOTORS 208VAC; 1" SPARGE LEGS	5/30/10	RMB
REVISIONS			